

Information for young people



Education

This leaflet will tell you about
Specialist Residential College



What is a specialist residential college?

It is a college where you live rather than going home every day. You can go home at weekends or holidays.

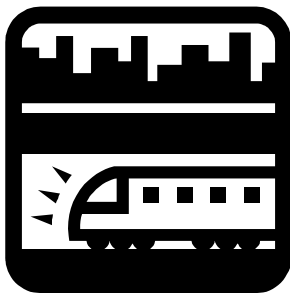
Why go to a specialist residential college?

You can only go to a residential college if you cannot go to your local college because they cannot meet all your needs.

You will have to visit your local college to see if they can meet your needs. You have to do this before you visit residential colleges.

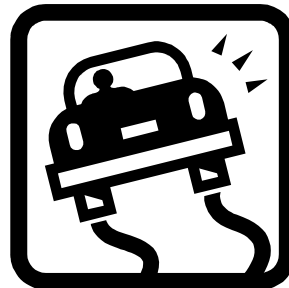


Where are the specialist residential colleges?



They are all over Great Britain. Some are nearer to Hertfordshire than others. You would probably have to travel in a car or train to get there.

There is one specialist college in Hertfordshire called St Elizabeth's College.

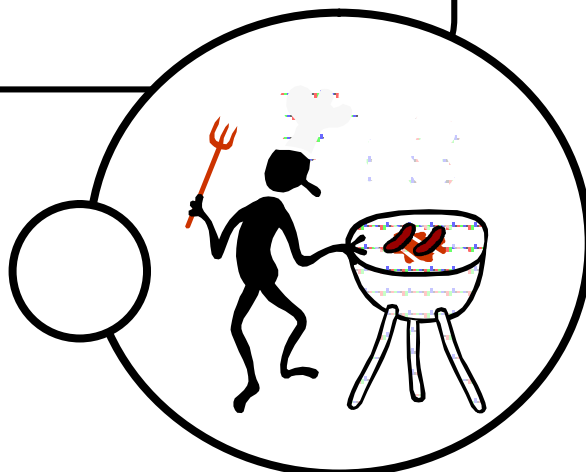


What would I do at a residential specialist college?



You would continue with your education. You can learn to look after yourself and become more independent. You can go out with your friends from the college in the evenings and at weekends.

How do I find out about residential specialist colleges?

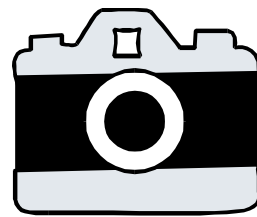


You can talk to your Connexions Personal Adviser. There are special books which tell you about specialist residential colleges. Look in your Connexions library. Your social worker could also talk to you about residential colleges.

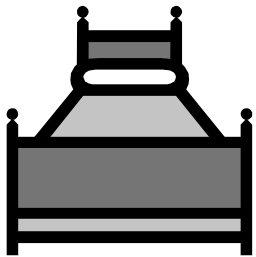
Leaflet 9: Specialist Residential College

If you decide that a residential college might be the place for you then your Personal Adviser can help you to arrange a visit. You could take some photos or a video to remind you of your visit.

Can I go and have a look at a specialist residential college?



Before I decide if the college is right for me, could I stay there for a few days?



Most colleges invite you to sleep there for a few nights. This is to make sure the college is right for you. If you and the college agree that it is the right place for you then you may have more visits before you go.

How long are the courses at residential college?

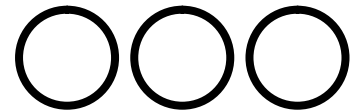
Usually 2 or 3 years.





What will I do when my course is finished?

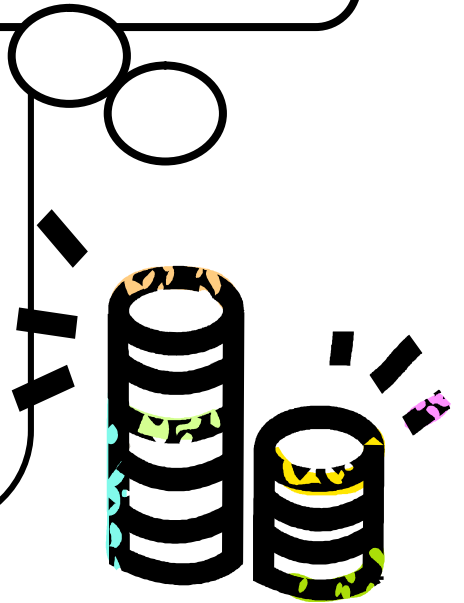
Your Personal Adviser will talk to you and your family about what to do next. You will plan for the future while you are still there.



Who pays for specialist residential college courses?

An organisation called the Learning and Skills Council pays for places at specialist residential colleges. Your Personal Adviser will tell the Learning and Skills Council that you would like to go to a specialist residential college.

The Learning and Skills Council decide if they will pay for you to go. The Learning and Skills Council will look to see that you meet the rules they use when deciding.





Your Connexions Personal Adviser

Connexions Access Ability Team:

Tel 01462 704901

Fax 01462 705001

Minicom 01462 704901

Email accessability@connexions-hertfordshire.co.uk

NATSPEC: National Association of Specialist Residential Colleges, has a booklet with information about residential colleges. For a copy look in your Connexions library or:

E-mail: chiefexecutive@natspec.org.uk

Website: www.natspec.org.uk