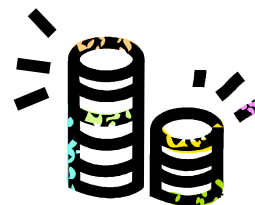


Information for young people



Benefits

This leaflet will tell you about **Benefits**



What are benefits?



Some people get money from the government to help them pay for the things they need. This money is called benefits.

If you have a disability you may be able to get benefits.

What might benefits help me pay for?

Benefits could help pay for things you need as a disabled person:

- Transport
- Care
- Housing

You may also be able to get benefits if you cannot work because of your disability. Your parents or carers may also be able to get benefits for looking after you.



Educational Maintenance Allowance (EMA)



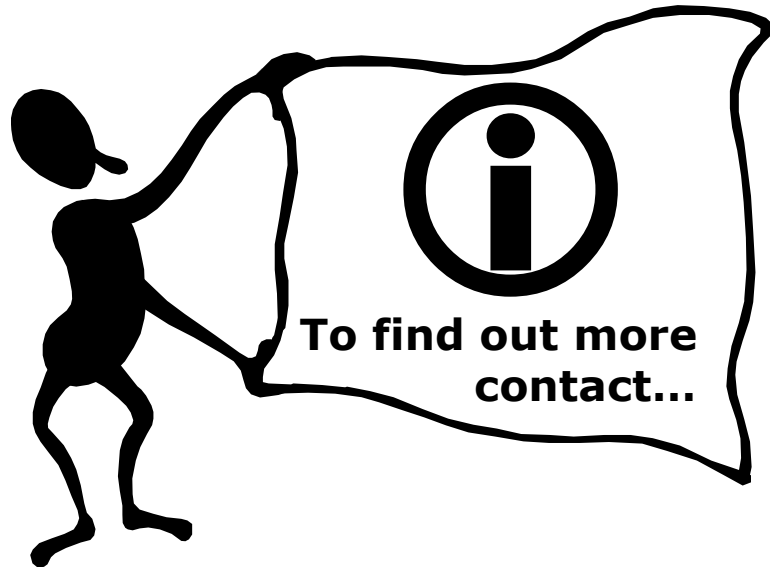
If you stay in education after the age of 16, you might be able to get some money each week. This money is called an Educational Maintenance Allowance (EMA).

You can get £10, £20 or £30 a week. How much money you get is worked out by how much money comes into your household.

If you get over £30,810 a year or more coming into your household you will not be able to get Educational Maintenance Allowance (EMA).

To get your money you have to keep attending education and do the work which your tutors ask you to do.

Benefits are very difficult to understand. You can talk to your parents/carers about benefits. The people in the list below might also be able to help you:



Your Connexions Personal Adviser

Connexions Access Ability Team:

Tel 01462 704901

Fax 01462 705001

Minicom 01462 704901

Email accessability@connexions-hertfordshire.co.uk

Leaflet 2: Benefits

Children Schools and Families: Children Schools and Families workers can give help with benefits. Contact your worker, or make a referral by calling **01438 471500** or **01923 471500**.

Adult Care Services: Adult Care Services workers can give help with benefits. Contact your worker, or make a referral by calling **01438 737400** or **01923 471400**.

Citizens Advice Bureau: To make an appointment at your Citizens Advice Bureau, please find the telephone number in your phone book. You can also find the numbers and addresses lists on **www.hertsdirect.org** and **www.adviceguide.org.uk**.

Benefits Enquiry Line: The Benefits Enquiry Line can send out leaflets and claim packs, for disability living allowance and carers allowance.

Opening times:

Monday – Friday 8.30am-6.30pm

Saturday 9.00am-1.00pm

Phone: **0800 882200**

Text phone: **0800 243355**

Fax: **01772 238953**

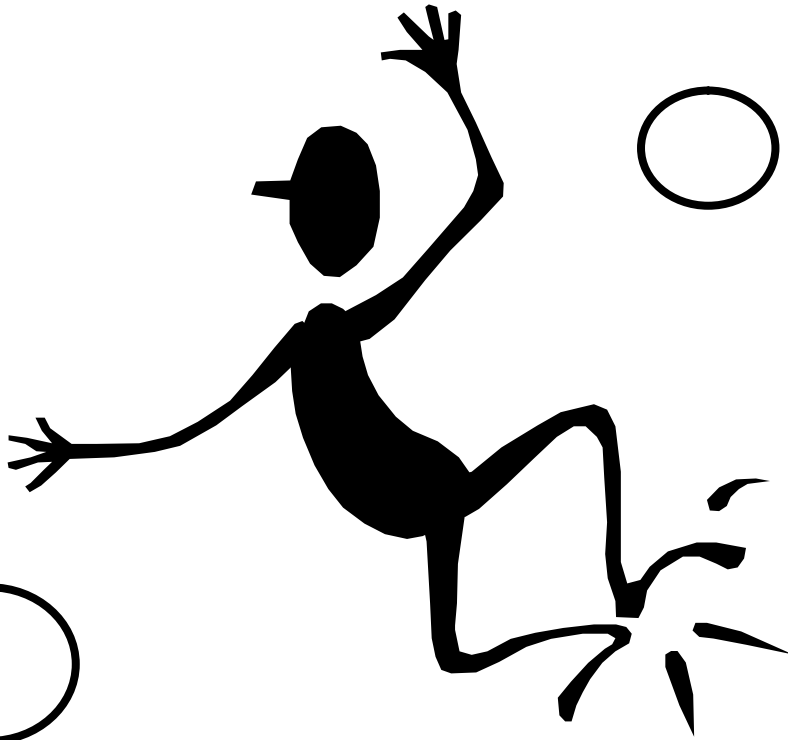
Email: **bel-customer-services@dwp.gsi.gov.uk**

Web page: **www.dwp.gov.uk**

Leaflet 2: Benefits

Herts Direct: www.hertsdirect.org/benefits provides information on-line on benefits.

Educational Maintenance Allowance (EMA): Call the helpline on **080 810 16219**



Please note: benefit rates will increase in April 2008



April 2008